



The Ultimate  
Driving Machine



# THE BMW 2 SERIES ACTIVE TOURER AND GRAN TOURER.

**BMW EFFICIENT DYNAMICS.**  
LESS EMISSIONS. MORE DRIVING PLEASURE.



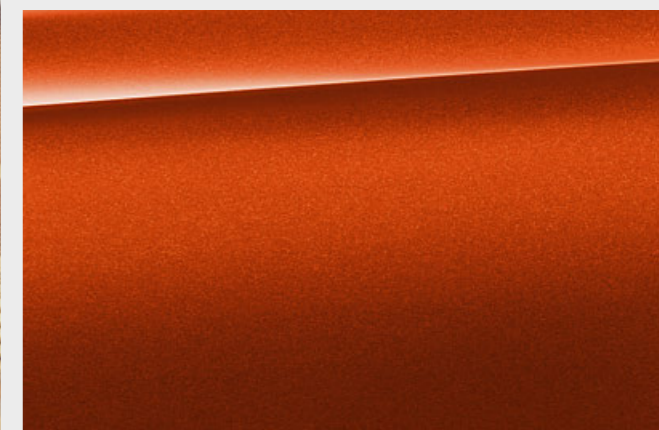
## THE BMW 2 SERIES ACTIVE TOURER AND GRAN TOURER.

### DIGITAL DISCOVERY: THE BMW BROCHURES APP.

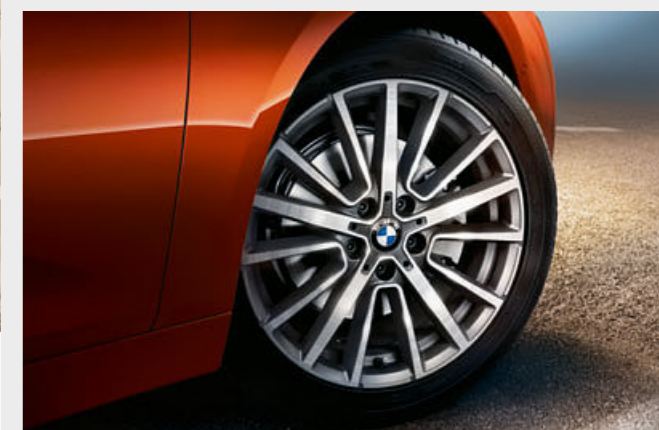
More information, more driving pleasure: the BMW brochures app offers you a brand new digital and interactive BMW experience. Download the BMW brochures app for your smartphone or tablet now and explore new perspectives of your BMW.



**18** Equipment highlights



**20** Colour worlds



**24** Wheels and tyres



**25** Genuine BMW Accessories



---

**FOR EVERYONE  
TO HAVE FUN.**

---

FOR THE WE IN YOU.



---

# LOVE AT THE FIRST MILE.

---

DYNAMIC EXTERIOR DESIGN II OPTIONAL 18" LIGHT ALLOY WHEELS II ENLARGED TAILPIPES II  
OPTIONAL STEPTRONIC DOUBLE CLUTCH TRANSMISSION II OPTIONAL BMW xDRIVE





# CONNECTING YOUR WORLDS.

BMW CONNECTED DRIVE SERVICES<sup>1,2</sup> AVAILABLE FOR SAFETY AND COMFORT || TIME-TO-LEAVE NOTIFICATION || OPTIONAL CONCIERGE SERVICES || REMOTE SERVICES

<sup>1</sup> For further information on BMW ConnectedDrive, particularly regarding the duration of services and associated costs, please visit [www.bmw-ConnectedDrive.co.uk](http://www.bmw-ConnectedDrive.co.uk), or contact the BMW ConnectedDrive Hotline on 0800 561 0555.

<sup>2</sup> All BMW ConnectedDrive services require a free BMW ConnectedDrive account.



# FULL CHARGE FORWARD.

BMW 225xe iPERFORMANCE ACTIVE TOURER WITH INTERNAL COMBUSTION ENGINE AND ELECTRIC MOTOR II INTELLIGENT ENERGY MANAGEMENT FOR EXTRAORDINARILY HIGH EFFICIENCY AND DYNAMICS II 78MPH PURELY ELECTRIC TOP SPEED





---

## HAS EVERYTHING. JUST NOT A BUZZ KILL.

---

NEW BMW TWINPOWER TURBO ENGINES II OPTIONAL ADAPTIVE LED HEADLIGHTS  
IN HEXAGONAL DESIGN II NEW KIDNEY GRILLE DESIGN II OPTIONAL WIFI HOTSPOT  
PREPARATION II OPTIONAL ENHANCED BLUETOOTH WITH WIRELESS CHARGING



---

# HAPPINESS INCREASES WHEN YOU SHARE IT.

---

THIRD ROW OF SEATS OR A MAXIMUM OF 1820 LITRES LUGGAGE COMPARTMENT VOLUME<sup>1</sup> ||  
IMPROVED SEATING COMFORT WITH STANDARD SEATS || GENEROUS SPACIOUSNESS ||  
OPTIONAL PANORAMIC GLASS SUNROOF



<sup>1</sup> Only available for the BMW 2 Series Gran Tourer.

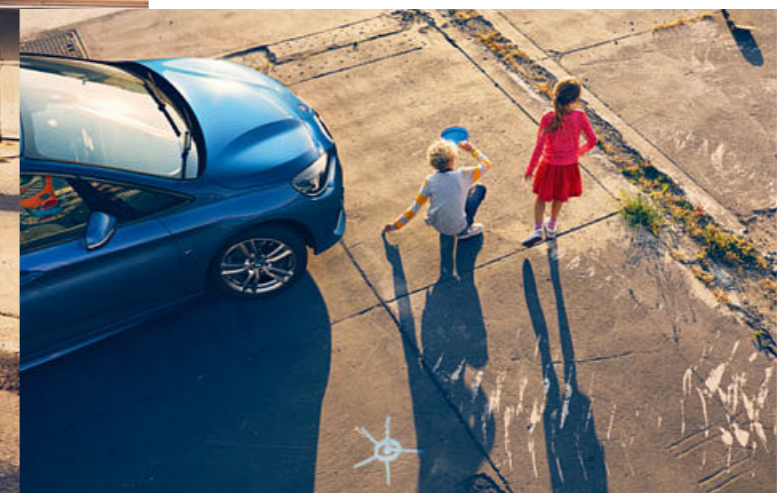


# FOR A LIFE WITH A DRIVE.

**SPORTY DESIGN OCCUPIES SPACE.** THE BMW 2 SERIES ACTIVE TOURER AND GRAN TOURER EXHIBIT EVERYDAY PRACTICALITY WITH DRIVING PLEASURE. THEY OFFER YOU PLENTY OF SPACE FOR YOUR ACTIVE LIFESTYLE WITHOUT HAVING TO GIVE UP ANYTHING: NEITHER THE TYPICAL BMW DRIVING DYNAMICS NOR THE SPORTY AND EXPRESSIVE DESIGN.



IN ADDITION, YOU BENEFIT FROM FLEXIBILITY THAT ADAPTS TO YOUR NEEDS. FOR EXAMPLE, THE THIRD ROW SEATING OFFERS GREATER CONVENIENCE IF YOU TRAVEL WITH UP TO SEVEN PEOPLE<sup>1</sup>. AND IF YOU CARRY A LOT OF LUGGAGE, THERE IS PLENTY OF SPACE TO USE TOO. EXPERIENCE SPORTY FUNCTIONALITY. **IN THE BMW 2 SERIES ACTIVE TOURER AND GRAN TOURER.**



<sup>1</sup> Only available for the BMW 2 Series Gran Tourer.

# EQUIPMENT HIGHLIGHTS.

Discover more with the new BMW brochures app. Now available for your smartphone and tablet.

■ Standard equipment □ Optional equipment



□ When open, the panoramic sun roof provides a great deal of fresh air. Closed, it creates a bright, light-flooded atmosphere in the interior. It opens and closes completely automatically at the push of a button or via the remote control and is equipped with slide and lift functions and a wind deflector.



■ The third row seating, with two individually folding and forward-facing seats, offers room for two additional passengers. To ensure good access, the second row of seats can be folded forwards with the easy-entry function. (Only available for BMW 2 Series Gran Tourer).

■ The through-loading system with rear seat backrests that can be folded down in a 40:20:40 split, guarantees flexibility when transporting bulky objects.



□ BMW Icon Adaptive LED Headlights include low and high-beam headlights (BI-LED), side lights and indicators.

■ LED foglights at the front are very similar to daylight and enable the driver to see better and drive more safely in inclement weather.



□ The seven-speed dual-clutch automatic transmission offers smooth gearshifts and outstanding driving comfort, all with low fuel consumption. (Only for 218i and 216d models).

■ The six-speed automatic transmission with electronic selector-lever ensures greater driving comfort, smoother gearshifts and low fuel consumption. (Only for 225xe models).



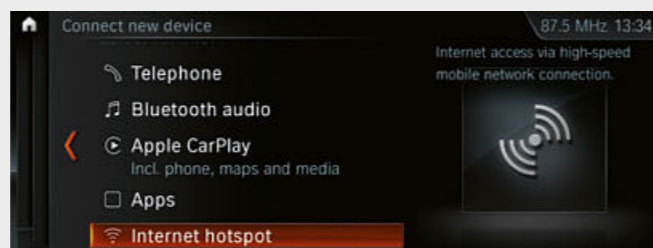
□ The Head-up Display projects all relevant driving information onto a panel in the driver's field of vision which means they can remain focused on the road.<sup>3</sup>



□ BMW Navigation Plus features the latest generation of BMW navigation systems with iDrive 6 (ID6) software. It features a built-in 8.8" touch display and is operated intuitively using either the iDrive Touch Controller, the direct-selection short cut keys, eight favourite buttons or the touchscreen with interactive tiles.<sup>4</sup>



□ The Reversing Assist camera enables improved orientation when reversing at speeds below 12mph, for example, when parking. It shows the area behind the car on the Control Display. Interactive track lines for measuring distance and turning circles assist you when manoeuvring. Obstacles are marked in colour.



□ Enhanced Bluetooth with wireless charging offers comprehensive telephony with Bluetooth connectivity and the technical capacity for a wifi hotspot.<sup>1</sup>

□ Wifi hotspot preparation enables the connection of mobile devices to the internet via the SIM card installed in the vehicle.<sup>2</sup>



□ Driving Assistant Plus provides a clear improvement in safety and comfort. It includes the functions of Driving Assistant plus camera-based Cruise Control with Stop&Go function as well as Traffic Jam Assist.<sup>5</sup>



□ Park Assist makes parallel parking easier. The system works by measuring potential spaces while driving past them at a low speed. When a suitable space has been found, Park Assist takes over steering while you are responsible for selecting the correct gear as well as pressing the accelerator and brake.<sup>6</sup>

<sup>1</sup> For smartphones without an inductive charging function, charging cases are available to purchase via BMW Accessories.

<sup>2</sup> The WiFi hotspot preparation fulfils all in-vehicle requirements for use of the internet with the maximum LTE standard. Usage is subject to cost.

<sup>3</sup> Content shown will depend on the equipment options chosen. Further optional equipment is required to display specific items.

<sup>4</sup> As part of BMW ConnectedDrive, in selected European countries, the system automatically updates maps for three years up to four times per year without incurring licensing fees.

<sup>5</sup> Function may be limited in darkness, fog or bright glare.

<sup>6</sup> Only available in conjunction with Park Distance Control (PDC) front and rear or Driver pack.

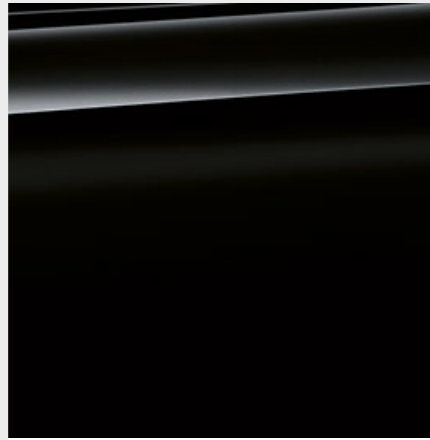
# EXTERIOR COLOURS.

Discover more with the new BMW brochures app. Now available for your smartphone and tablet.

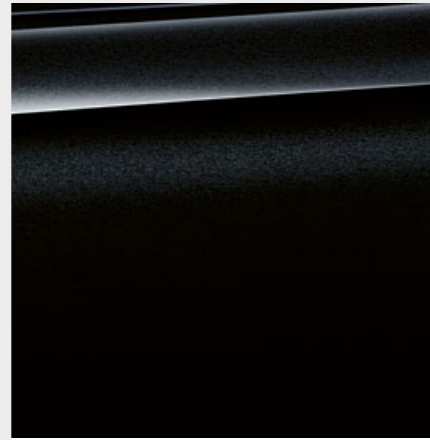
■ Standard equipment □ Optional equipment



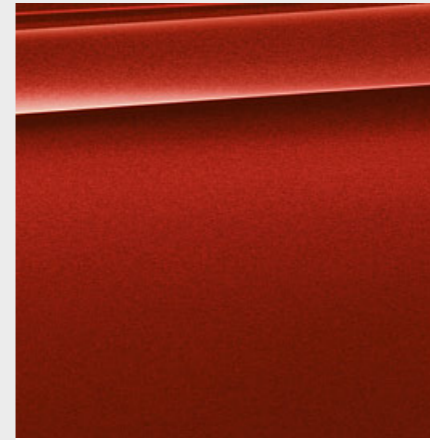
■ **Non-metallic** 300 Alpine White



■ **Non-metallic** 668 Jet Black<sup>1</sup>



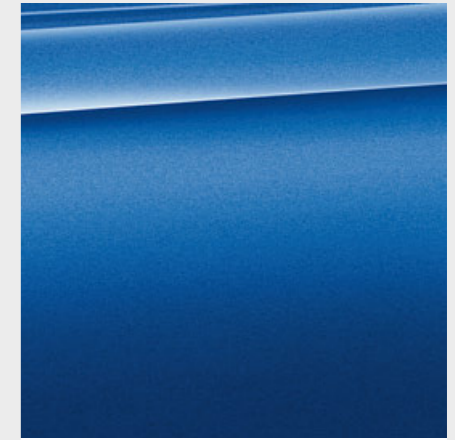
□ **Metallic** 475 Black Sapphire



□ **Metallic** C06 Flamenco Red Xirallic<sup>1</sup>



□ **Metallic** C1X Sunset Orange<sup>1</sup>



□ **Metallic** B45 Estoril Blue<sup>2</sup>

## M Sport



□ **Metallic** A83 Glacier Silver



□ **Metallic** A89 Imperial Blue Xirallic<sup>1</sup>



□ **Metallic** A96 Mineral White



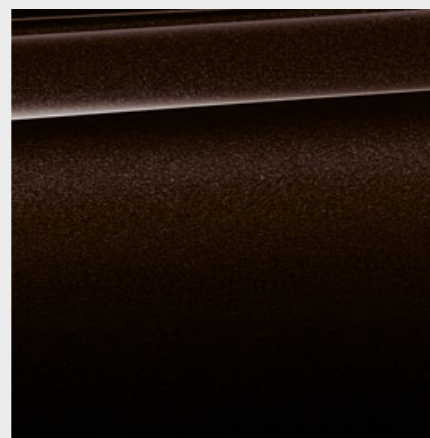
□ **Metallic** C10 Mediterranean Blue<sup>1</sup>



□ **Metallic** B39 Mineral Grey



□ **Metallic** C2S Jucaro Beige<sup>1</sup>



□ **Metallic** B53 Sparkling Brown<sup>1</sup>

**[ BMW Configurator ]** Use the configurator to create your very own, personalised BMW. All current engines, colours and equipment are available to choose from. For further details, see [www.bmw.co.uk/configurator](http://www.bmw.co.uk/configurator)

**[ Colour samples ]** These colour samples are intended as an initial guide to the colours and materials available for your BMW. However, experience has shown that printed versions of paint, upholstery and interior trim colours cannot in all cases faithfully reproduce the

appearance of the original colour. Please discuss your preferred colour choices with your BMW Retailer. There you can also see original samples and be assisted with any requests.

<sup>1</sup> Only available for SE, Sport and Luxury models.  
<sup>2</sup> Only available for M Sport models.

# INTERIOR COLOURS.

Discover more with the new BMW brochures app. Now available for your smartphone and tablet.

■ Standard equipment □ Optional equipment

## CLOTH

Available with

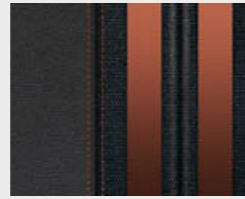


■ SE

**Grid cloth**  
EGAT Anthracite<sup>1</sup>

## CLOTH/SENSATEC COMBINATION

Available with



■ Sport

**Cloth/Sensatec combination KFIX**  
Anthracite with Orange highlight



■ Sport

**Cloth/Sensatec combination KFL1**  
Anthracite with Grey highlight

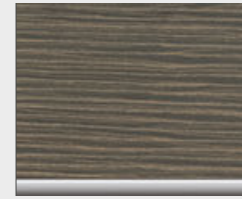
## INTERIOR TRIM

Available with



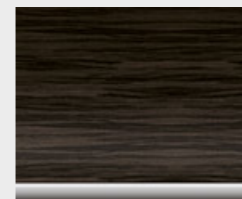
■ SE

4FS Oxide Silver with High-gloss Black finisher



□ Sport  
□ Luxury

4FZ Finition Tide wood with Pearl Chrome finisher

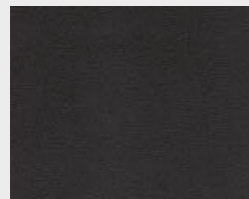


□ SE  
□ Sport  
■ Luxury  
□ M Sport

4LR Finition Stream wood with Pearl Chrome finisher

## SENSATEC.

Available with

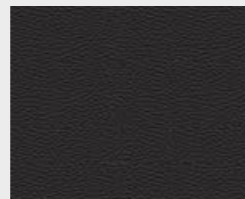


□ SE  
□ Sport

**Sensatec**  
KCSW Black

## LEATHER

Available with



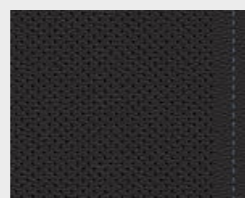
□ SE

**Dakota leather**  
LCSW Black/Black interior world



□ Sport  
■ Luxury  
■ M Sport

**Dakota leather**  
PDMY Mocha Brown with Chestnut stitching



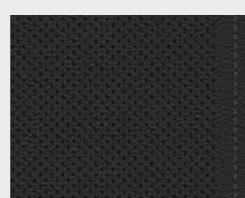
■ M Sport

**Dakota leather**  
PDN4 Black with Blue stitching



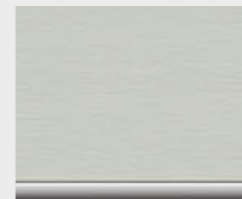
□ Sport  
■ Luxury  
■ M Sport

**Dakota leather**  
PDOA Oyster with Grey highlight and stitching



□ Sport  
■ Luxury  
■ M Sport

**Dakota leather**  
PDSW Black with Grey stitching



□ SE  
□ Sport  
□ Luxury  
□ M Sport

4LS Brushed Aluminium with Pearl Chrome finisher



□ SE  
■ Sport  
□ Luxury  
□ M Sport

4LU Black, High-gloss with Pearl Chrome finisher

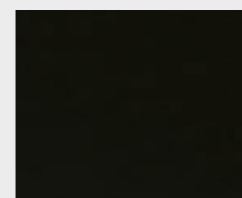


■ M Sport

4WE Aluminium Hexagon with Pearl Chrome finisher

## HEADLINING

Available with



□ SE  
□ Sport  
□ Luxury  
■ M Sport

**775 Anthracite**

Please note that even normal long or short-term use can lead to permanent upholstery damage. This can be caused in particular by non-colourfast clothing.

<sup>1</sup> Only available in conjunction with standard seats.

# WHEELS AND TYRES.

Discover more with the new BMW brochures app. Now available for your smartphone and tablet.



□ 18" light alloy Star-spoke style 512 wheels.<sup>1</sup>



□ 16" light alloy V-spoke style 471 wheels.<sup>2</sup>



□ 16" light alloy Double-spoke style 473 wheels.<sup>3</sup>



□ 16" light alloy Turbine style 472 wheels.<sup>3</sup>



□ 17" light alloy Double-spoke style 385 wheels.<sup>1</sup>



□ 17" light alloy V-spoke style 479 wheels.<sup>1</sup>



□ 17" light alloy Multi-spoke style 546 wheels.<sup>1</sup>



□ 18" light alloy Y-spoke style 484 wheels.<sup>1</sup>

<sup>1</sup> Not available for M Sport models.  
<sup>2</sup> Standard for SE models only.  
<sup>3</sup> Optional for SE models only.

# GENUINE BMW ACCESSORIES.

■ Standard equipment □ Optional equipment ○ Accessories



○ The modern **roof box in black** with titanium silver side panels has a capacity of 420 litres and is compatible with all BMW roof rack systems. Due to the fact that it can be opened from both sides and has triple central locking on each side it is convenient to load and lock for theft protection.



○ 19" BMW M Performance light alloy wheels Double-spoke style 766 M in Bicolor black matt, bright turned. TPMS summer complete wheel set with run-flat tyres.



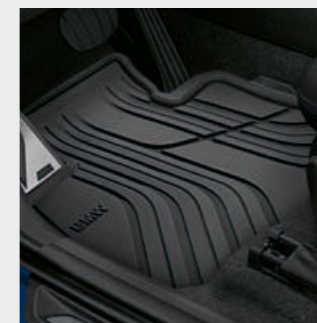
○ **BMW Roof Bars** allow you to fit a range of items onto the roof of your car, including bike carriers and roof boxes.



○ The universal holder is adjustable in terms of size and it is snapped into position into the basic carrier of the **Travel & Comfort System** that is available separately. It provides a secure hold for a wide range of Apple and Samsung tablets from 7" to 11" with Travel & Comfort tablet safety case. It can be rotated through 360°, tilted and fixed in the desired position.



○ The durable, anti-slip, water-resistant **fitted mat** with raised borders on all sides protects the luggage compartment from dirt and moisture.



○ The perfectly fitted, **all-weather floor mats** with a raised border and elegant design protect the front footwell against moisture and dirt.



○ The foldable **Compact rear bike rack** is light but sturdy and can carry up to 60kg. It can be quickly and securely mounted on the tow ball and transport up to two bicycles or e-bikes. When folded up, it can be stored in the luggage compartment tray, safe from spray and protected in the event of a collision.

Discover the wide range of innovative solutions available for the exterior and interior, communication & information, and for transportation & the luggage compartment. Your BMW Retailer is on hand to advise you on the whole range of Genuine

BMW Accessories and can also provide you with an accessories catalogue. For further information, please visit [www.bmw.co.uk/accessories](http://www.bmw.co.uk/accessories)

**BMW 2 SERIES 220i SPORT ACTIVE TOURER:**

BMW TwinPower Turbo four-cylinder petrol engine, 192hp (141kW), 18" light alloy Star-spoke style 512 wheels, Sunset Orange metallic paint, Cloth/Sensatec seats in Anthracite with Orange highlight, Brushed Aluminium interior trim with Pearl Chrome finisher.

**BMW 2 SERIES 220d xDRIVE M SPORT GRAN TOURER:**

BMW TwinPower Turbo four-cylinder diesel engine, 190hp (140kW), 18" M light alloy Double-spoke style 486 wheels, Estoril Blue metallic paint, Dakota leather seats in Black with Blue stitching, Aluminium Hexagon interior trim with Pearl Chrome finisher.

**BMW 2 SERIES 225xe iPERFORMANCE SPORT ACTIVE TOURER:**

BMW TwinPower Turbo three-cylinder petrol engine and electric motor with a system output of 224hp (165kW), 17" M light alloy Double-spoke style 549 wheels, Glacier Silver metallic paint, Dakota leather seats in Oyster with Grey highlight and stitching, Brushed Aluminium with Pearl Chrome finisher.

The models illustrated in this catalogue show the equipment and configuration options (standard and optional) for vehicles produced by BMW AG for the German market. Alterations in standard and optional equipment and the configurations available for the different models, as described in this brochure, may differ at the time of printing, or according to the specific requirements of other markets. Your local BMW Retailer is available to provide further details. Part number 01 29 2 466 869. September 2018.

© BMW AG, Munich, Germany. Not to be reproduced wholly or in part without prior written permission of BMW AG, Munich.

411 002 294 21 2 2018 BM. Printed in Germany 2018.